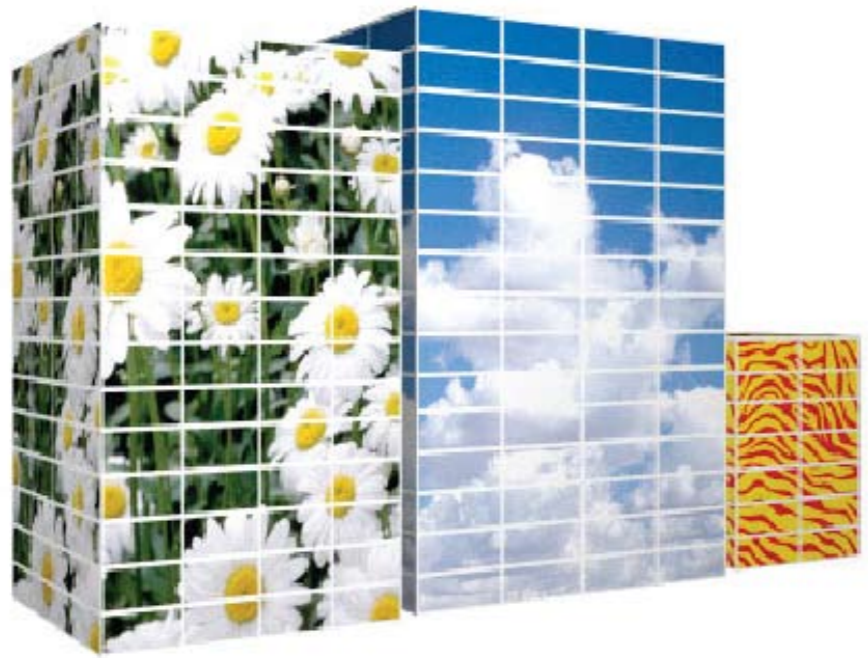


Uniclass L513:P314	EPIC E239:X342
Cl/SfB (41)	Ro3



- **Chromatics RS** – A unique coloured safety glass for external façade applications
- **Chromatics RS** – A flawless 100 % opaque, flat finish with no roller wave (toughening distortion) or pinhole burns – resulting in a superior reflected image quality. Its full opacity and aluminium foil make it suitable for structural bonding
- **Chromatics RS** – A lightweight glass façade material (6mm Chromatics weighs 15kg)

Maximum panel size – 3000 x 1200 mm
Minimum panel size – 600 x 300 mm
- **Chromatics RS** – Manufactured with a low energy process from renewable, recyclable resources containing no heavy metals or toxic elements (such as lead, cadmium and chromium)
- **Chromatics RS** – Conforms to BSEN 12600 3 (b) 3 safety glass
- **Chromatics RS** - More resistant to point impact than toughened glass - A unique, patented laminate of glass, organic pigment and aluminium. Remains intact if impacted heavily
- **Chromatics RS** – Wind loading - fully tested at Vinci Technology Centre (formerly Taylor Woodrow). Serviceability Passed at 2400Pa / Safety Passed at 3600Pa
- **Chromatics RS** – Material is supplied cut and factory edged. Unlike ceramic coated toughened glass it can also be cut after processing
- **Chromatics RS** – Any colour in the RAL spectrum can be achieved with precise replication every time. The material is multi-directional
- **Chromatics RS** - Any size of digital imagery can be precisely and durably reduced (subject to confirmation of copyright ownership)



Chromatics RS – Exterior grade, lightweight, opaque, coloured safety glass cladding



Cladding Solutions Ltd
Unit 10 Blenheim Court,
Brownfields, Welwyn Garden City,
Herts AL7 1AD

Tel: 01707 333 344
Fax: 01707 333 343
Design: project@claddingsolutions.com
Marketing: info@claddingsolutions.com
www.claddingsolutions.com



A r c h i t e c t u r e = a r t + e n g i n e e r i n g

www.claddingsolutions.com

Introduction

Chromatics RS is the result of over 15 years of intensive R&D. It has been extensively tested at Pilkington's Technology Centre, Lathom Laboratories, Vinci Technology Centre and Wintech. The material represents a new generation in opaque safety glass cladding.

Durability of Chromatics RS is ensured by its unique construction - comprising an integrated laminate of float glass, colour and metal foil.

Should a panel suffer considerable point impact resulting in fracture, the panel will remain intact, waterproof and functional until replaced - Tested by Wintec Standard Chromatics RS conforms to BSEN 12600 3 (b) 3 (Chromatics RS Resist conforming to BSEN 12600 1 (b) 1 is available).

Representing the future of glass rainscreen cladding, combining performance and aesthetics, Chromatics RS is a perfect finishing touch to make any project stand out.

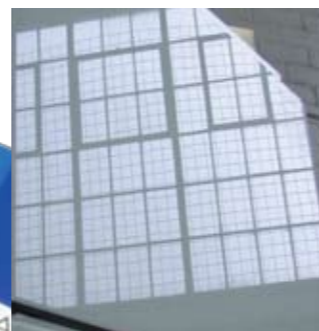
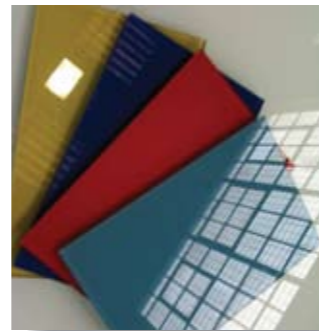
Flawless exteriors

Ideal for brightening any building through the perfect reproduction of corporate imagery, Chromatics RS has unparalleled aesthetics. Its production process causes no roller wave distortions, pinholes or transparency across the panel.

Designed specifically for use in rainscreen façades, Chromatics RS is available in any RAL colour or digital print. The material is not a back painted glass and offers an unrivalled depth and consistency of colour.

RAL colours can be precisely matched (CIELab standard) and there is no colour variation from panel to panel or batch to batch. Its good looks are designed to last, the pigments used in the colour process are designed for use as a 1st surface application remaining UV stable for more than 10 years (Natural exposure Florida tests carried out by ICI Holden) With Chromatics RS the colour layer is encapsulated between the glass veneer and the aluminium vapour barrier therefore UV resistance is significantly improved.

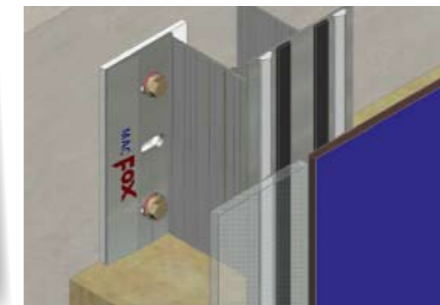
Chromatics RS is ideally suited for the picture perfect replication of digital imagery. It offers unrivalled depth and consistency across the entire RAL spectrum, so colours will always match the original design vision. With a low-temperature production process that causes no pigment burns, it ensures an impeccable aesthetic.



Technical Data

Thickness	6.5mm
Weight	15kg/m ²
Maximum panel size	3000 x1200mm*
Wind resistance	Serviceability: > Pass at 2400Pa Safety: Pass at 3600Pa
Weather resistance	>BS EN 12453, >BS 3900
Thermal safety	To achitectural requirements
Impact resistance	BS EN 12600 (safety glass)
Adhesion	>BS EN 1542
Life expectancy	50 years
Fire rating	N/A – non-combustible
Light transmittance	Zero
Bonding approvals	Silicone, polyurethane, poltsulphide
Vapour barrier	Aluminium

Fixing Solutions



As part of a complete cladding package, CSL offers an innovative structural bond secret fix solution to ensure that Chromatics RS provides a seamless façade. The system guarantees the digital imagery or bold colours of the façade's exterior won't be interrupted by unsightly mechanical fixings.

CSL has teamed up with Eurofox Engineering Ltd (EEL) and global building product manufacturer Sika®. The three companies have worked extensively together over many years to provide innovative façade solutions to a wide range of projects.

Providing additional assurance to specifiers is the knowledge that both the Eurofox Rainscreen

Cladding Support System and the SikaTack® Panel Adhesive system carry British Board of Agrément (BBA) certification.

Green credentials

Chromatics RS is made from renewable resources requiring significantly less energy to produce than regular ceramic coated toughened glass and is 100% recyclable.

Chromatics RS contains no toxic elements or heavy metals (cadmium, lead or chromium) in its organic pigments. No coatings with heavy metals or toxic elements are used during its manufacture and it does not require disposal by incineration.